



60 INCHES AWNING & MARINE SOLIDS



www.world-of-sattler.com

FACTS

OVER 100 YEARS OF UNMATCHED QUALITY AND PERFORMANCE

- FADE RESISTANT
- BLEACH CLEANABLE
- STAIN & WATER RESISTANT
- BREATHABLE
- MOLD & MILDEW RESISTANT
- HIGH IN ABRASION



FABRIC SPECIFICATIONS

BASE FABRIC	100% SOLUTION-DYED ACRYLIC	STANDARD PUT-UP	55-65 YARDS	FINISHED WEIGHT	9 OZ/SQ.YD.
WARRANTY	10 YEARS	WATER COLUMN	14,6 INCHES	FINISHED WIDTH	60 INCHES

CLEANING INSTRUCTIONS

NORMAL STAINS: Remove any loose dirt. Prepare a mixture of cold to lukewarm water and mild soap. Rub in mixture with a soft brush and allow the mixture to thoroughly soak into the fabric. Rinse well with water and air dry. Do not machine dry.

STUBBORN STAINS: Remove as much surface dirt as possible. Soak fabric for hour in a mixture of 1 gallon cold water, 1/2 cup bleach, and 1/2 cup mild soap. Rub in mixture with a soft brush and rinse thoroughly with cold to lukewarm water and air-dry.

Never use water over 100° Fahrenheit. Do not machine dry. Detergents can be used on Sattler fabrics without harm; it may however remove some of the water and stain resistant properties.



SATTLER CORPORATION
Toll Free 866.688.3872
447 Main Street
Hudson, NC 28638

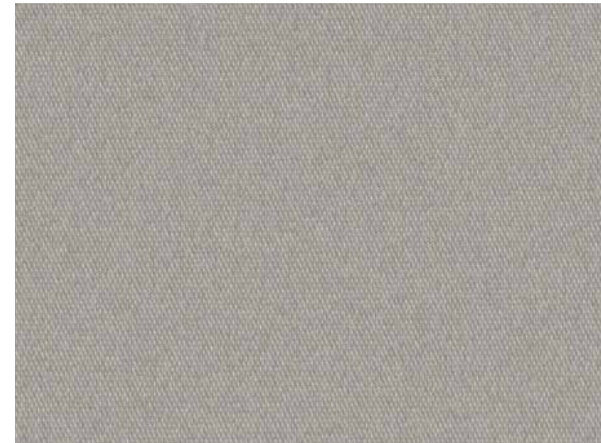
sales-usa@sattler-global.com
www.sattler-global.com

Note: Subject to change depending on technical upgrades. Values indicated without their specific tolerance levels are nominal values with a tolerance of +5 %. All data presented is given to the best of our current knowledge for guidance purposes and is not legally binding. The technical data in the material data sheet is based on experience from current productions and does not constitute any quality agreement. This data refers to goods in originally manufactured condition without any processing or handling by the customer. The given data is for information only and merely serves as a guide. It will in no way release the customer from checking the suitability of the intended use or of any resulting liability, before processing and/or treatment.

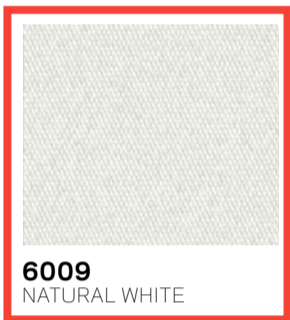
60 INCHES AWNING & MARINE SOLID



SATTLER 60 INCH SOLIDS ARE 100% WOVEN IN THE USA



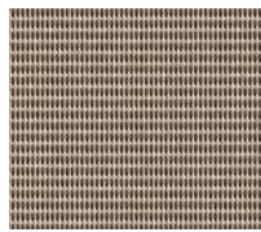
6008
CADET GREY



6009
NATURAL WHITE



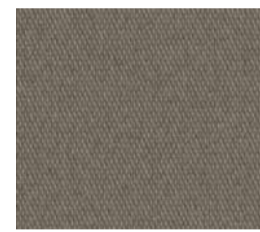
6020
KHAKI



6032
DESERT BEIGE



6050
STONE



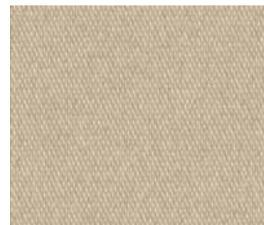
6026
TAUPE



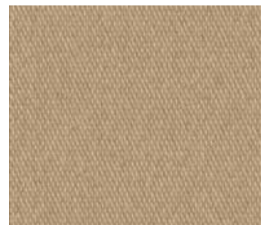
6056
KONA



6034
SAND



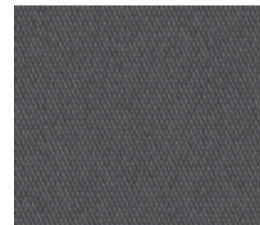
6006
ANTIQUE BEIGE



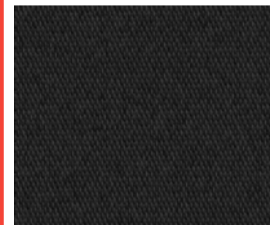
6025
LINEN



6008
CADET GREY



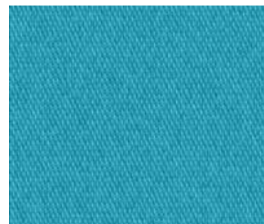
6061
STORM GREY



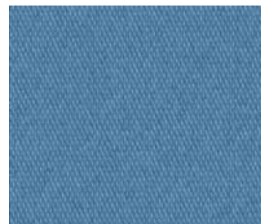
6005
BLACK



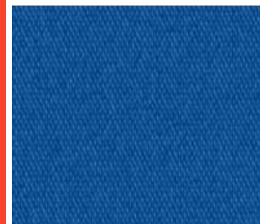
6072
ARUBA



6064
CARIBBEAN BLUE



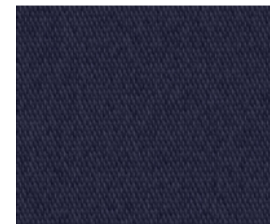
6051
ISLAND BLUE



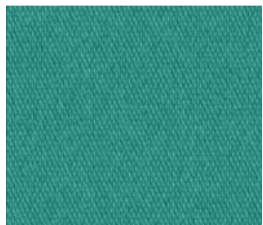
6002
PACIFIC BLUE



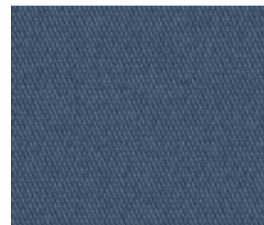
6022
ROYAL NAVY



6003
CAPTAIN'S NAVY



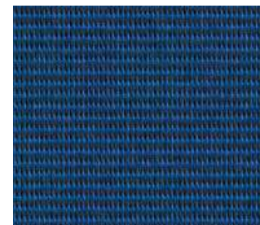
6007
AQUAMARINE



6039
STEEL BLUE



6041
CLASSIC ROYAL BLUE



6014
CATALINA BLUE



6074
MEDITERRANEAN TWEED



6046
PURPLE HAZE



6016
OZ GREEN



6065
EMERALD



6001
FOREST GREEN



6045
CORAL



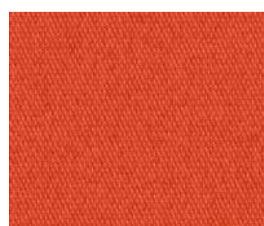
6063
HIBISCUS



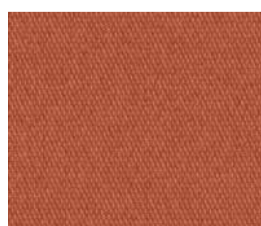
6004
BURGUNDY



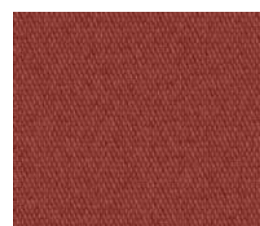
6023
DANDELION



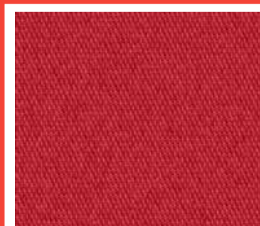
6062
TANGERINE



6049
POTTERY



6035
TERRA COTTA



6021
CARDINAL RED



6010
CHINA RED



Environment & Sustainability: certified according to ISO 14001 & Öko-Tex



Oil and dirt repellency



Mildew resistant

100% SOLUTION DYED ACRYLIC
ALL COLORS ARE AVAILABLE IN FULL ROLLS OR CUT YARDAGE;
APPROPRIATE CHARGES AND LIMITATIONS APPLY.