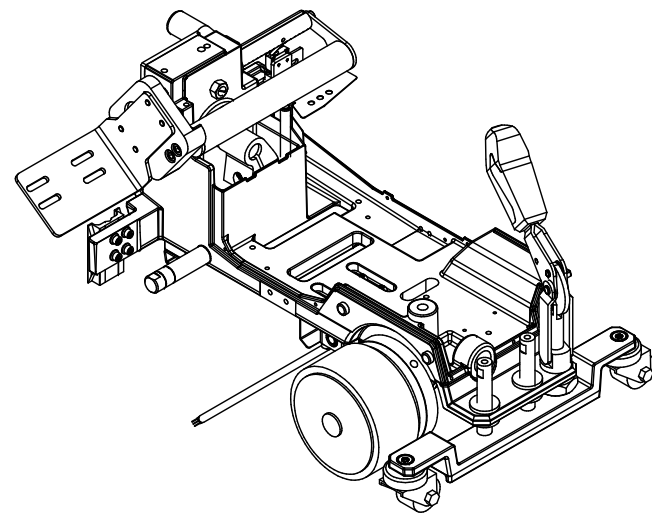


A

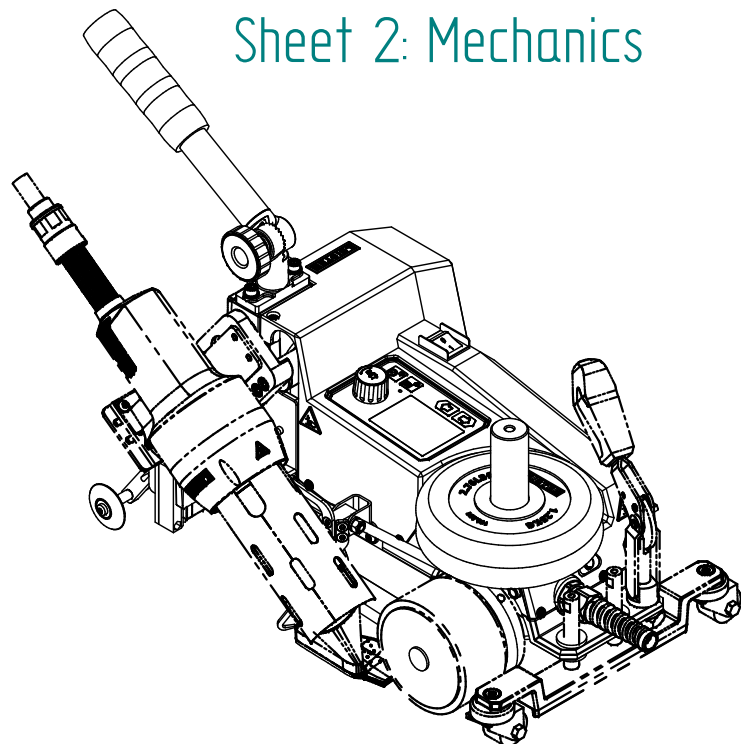
B

C

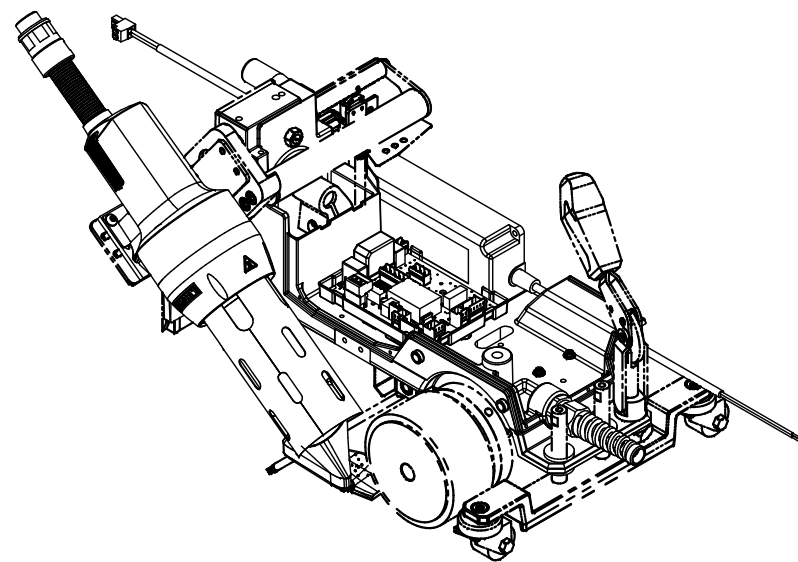
D



## Sheet 2: Mechanics



## Sheet 4: Housing and add-on pieces



## Sheet 3: Electronics and Hot air blower

Pos.	Name	Standard	Material	Leister	Bossard	Pos.	Name	Standard	Material	Leister	Bossard
1	Hex socket cap screw M2 x 10	ISO 4762	INOX A2	141.244	1420593	1	Hex socket cap screw M2 x 10	ISO 4762	INOX A2	141.244	1420593
23	Countersunk screw M6 x16	ISO 10642	INOX A2	120.992	1235362	2	Hex socket cap screw M3 x 5	DIN 7984	INOX A2	152.759	1256556
24	Countersunk screw M8 x 25	ISO 10642	INOX A2	155.399	1235427	3	Hex socket cap screw M3 x 8	ISO 4762	INOX A2	120.744	1233114
25	Cheese head screw M3 x 6		INOX A2	137.756	3233662	4	Hex socket cap screw M3 x 12	ISO 4762	INOX A2	120.807	1233130
26	Cheese head screw M4 x 20	ISO 14580	INOX A2	163.858	3108730	5	Hex socket cap screw M4 x 6	ISO 4762	INOX A2	120.808	1233173
27	Hex head asm. screw M5 x 16	DIN 933 Z1	INOX A2	165.279	3061288	6	Hex socket cap screw M4 x 8	ISO 4762	INOX A2	102.139	1233181
28	Lockwasher M3 (3.25/6.2/0.8)	DIN 127 B	INOX A2	100.446	1253565	7	Hex socket cap screw M4 x 10	ISO 4762	INOX A2	120.809	1233203
29	Lockwasher M4 (4.25/7.6/0.9)	DIN 127 B	INOX A2	101.008	300217533	8	Hex socket cap screw M4 x 14	ISO 4762	INOX A2	156.670	1111353
30	Lockwasher M5 (5.35/9.2/1.2)	DIN 127 B	INOX A2	100.124	1253603	9	Hex socket cap screw M4 x 35	ISO 4762	INOX A2	120.911	1111388
31	Washer M3 (3.2/9/0.8)	ISO 7093	INOX A2	102.275	1117122	10	Hex socket cap screw M5 x 16	ISO 4762	INOX A2	100.424	1233297
32	Washer M4 (4.3/9/0.8)	ISO 7089	INOX A2	100.139	1253204	11	Hex socket cap screw M5 x 20	ISO 4762	INOX A2	101.025	1233300
33	Washer M4 (4.3/12/1)	ISO 7093	INOX A2	102.241	1117130	12	Hex socket cap screw M6 x 20	ISO 4762	INOX A2	101.113	1233378
34	Washer M5 (5.3/10/1)	ISO 7089	INOX A2	100.123	1253212	13	Hex socket cap screw M6 x 30	ISO 4762	INOX A2	100.927	1032844
35	Washer M5 (5.3/15/1.2)	ISO 7093	INOX A2	102.238	1755609	14	Pan head cap screw M3 x 16	ISO 14583	INOX A2	124.291	3061610
36	Washer M6 (6.4/12/1.6)	ISO 7089	INOX A2	100.951	1965549	15	Pan head cap screw M5 x 8	ISO 7380-1	INOX A2	120.920	1348892
37	Washer M10 (10.5/40/1.5)		INOX A2	170.063	3061842	16	Pan head cap screw M5 x 12	ISO 14583	INOX A2	100.976	3061628
38	Hexagonal nut M8 x 6.5	ISO 4023	INOX A2	100.321	1241508	17	Pan washer head screw M3 x 6		INOX A2	130.322	3060942
39	Hex locking nut M6	DIN 985	INOX A2	101.174	1242407	18	Countersunk screw M3 x 8	ISO 14581	INOX A2	121.628	3061684
40	Set screw M4 x 4	ISO 4026	INOX A2	117.457	1235583	19	Countersunk screw M4 x 8	ISO 10642	INOX A2	129.470	1235184
41	Set screw M5 x 5	ISO 4026	INOX A2	121.632	1235710	20	Countersunk screw M4 x 10	ISO 10642	INOX A2	120.599	1235192
42	Set screw M6 x 6	ISO 4029	INOX A2	122.769	1115103	21	Countersunk screw M5 x 10	ISO 10642	INOX A2	120.790	1235249
43	Set screw M6 x 8	ISO 4026	INOX A2	116.003	1235877	22	Countersunk screw M6 x 10	ISO 10642	INOX A2	129.472	1235338

Standard components can no longer be ordered as a single unit.  
They are only available on request and restricted to a minimum order quantity.

**& KP 1 K-20** Apply universal grease  
Mit Universalfett schmieren

**@ Loctite 242** Medium strength threadlocker  
Schraubensicherung mittelfest

Material: -		Volume:				
Date	Drawn by	<h1>UNIPLAN 300 / 500</h1>				
08.04.20	Lack, Andy					
Date	Checked by					
Leister Technologies AG Switzerland		Format	Scale		Drawing number	Revision
		A3	1:6		020.901	E





A

B

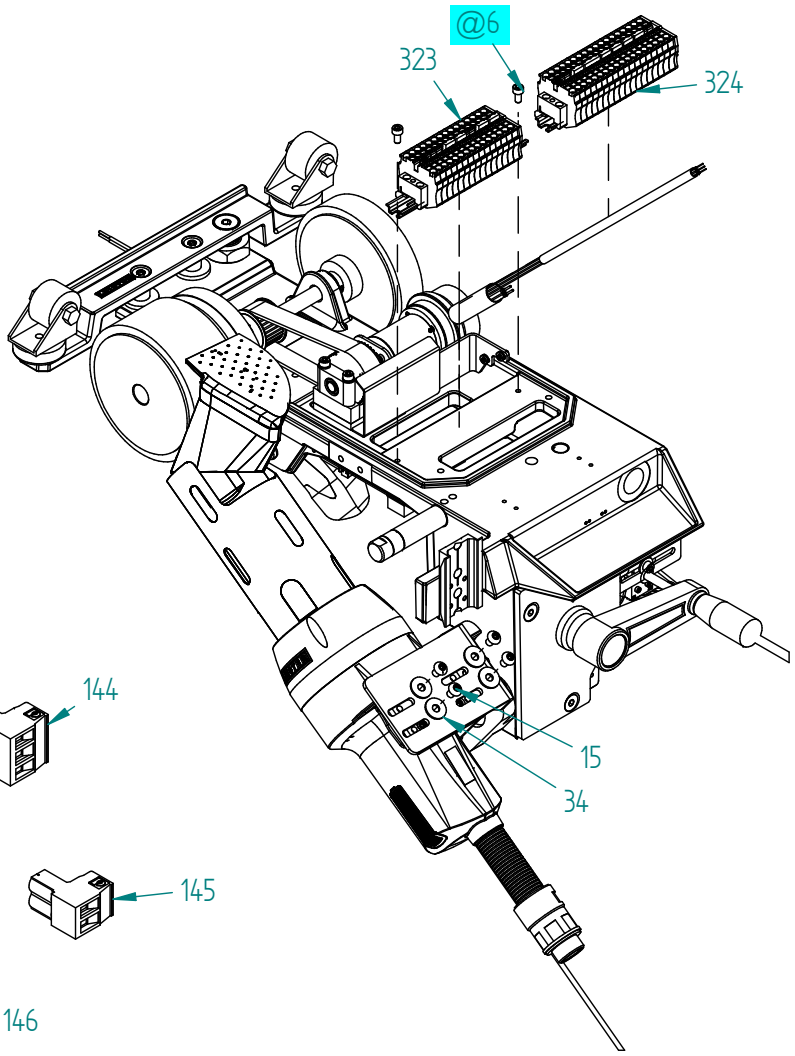
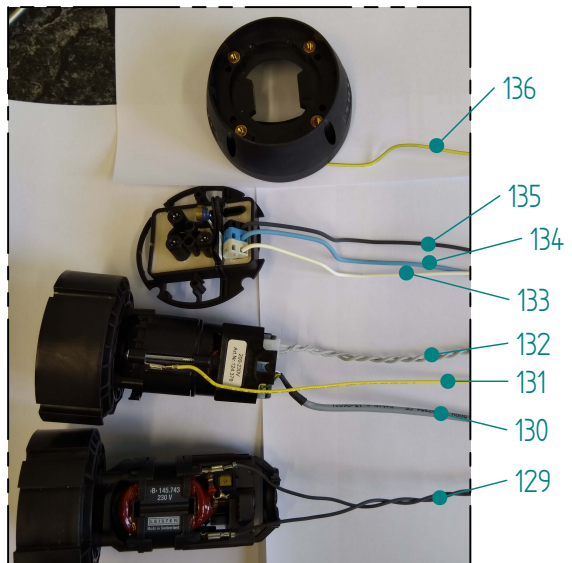
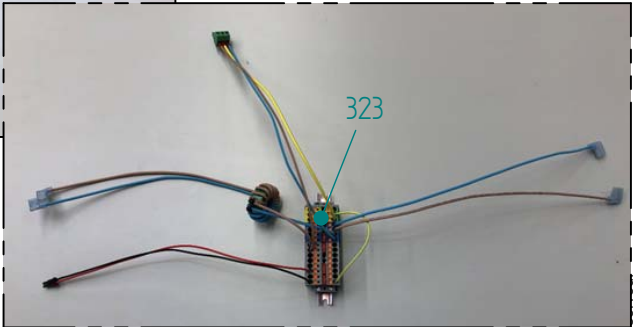
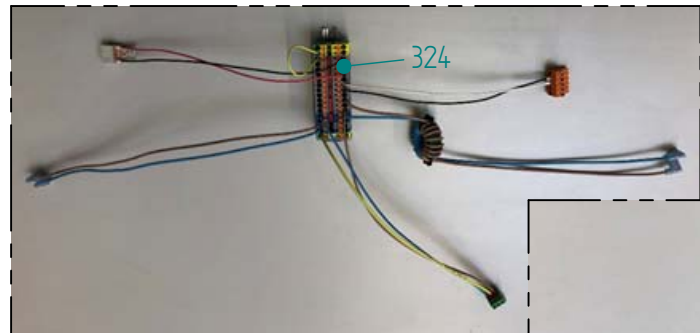
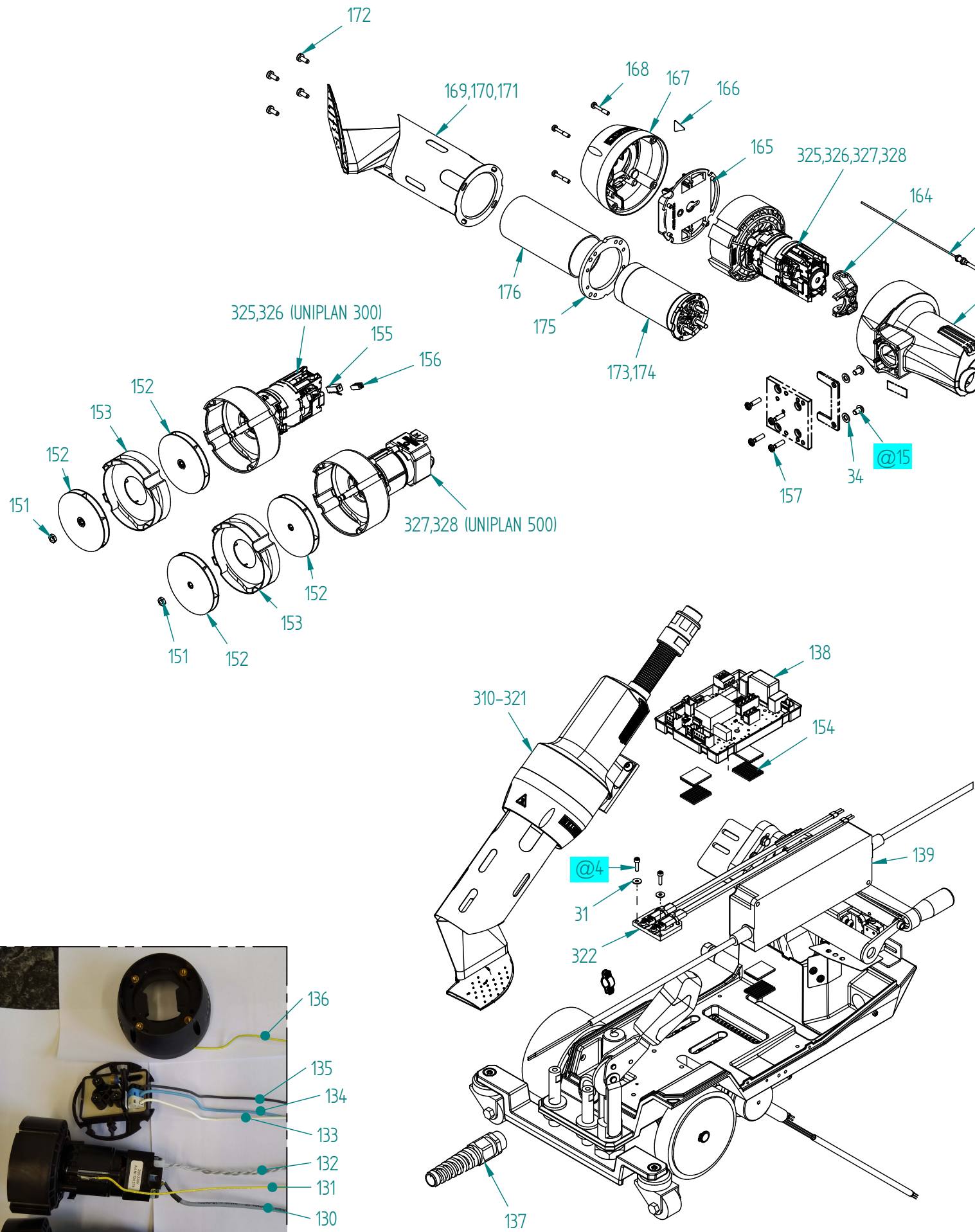
C

D

1

2

3



1:2

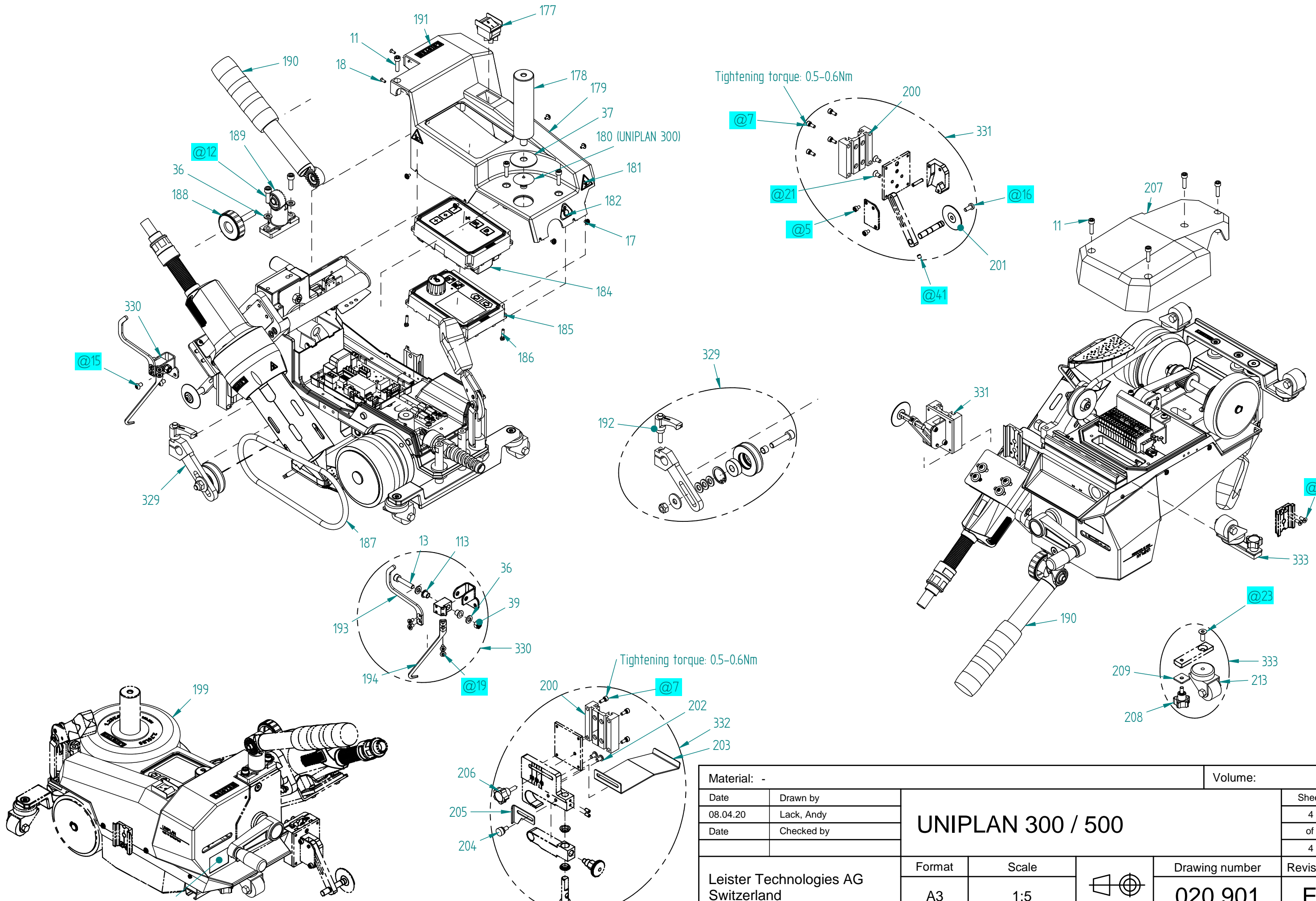
Material: -				Volume:	
Date	Drawn by	<b>UNIPLAN 300 / 500</b>			Sheet
08.04.20	Lack, Andy				3
Date	Checked by				of
Leister Technologies AG Switzerland			Format	Scale	Drawing number
			A3	1:5	020.901
					Revision
					E

This document and the information in it contained are property of LEISTER and as such, they are to be considered reserved. Therefore, any reproduction in any form or by any means, without prior written permission of LEISTER is forbidden.

1

2

3



This document and the information in it contained are property of LEISTER and as such, they are to be considered reserved. Therefore, any reproduction in any form or by any means, without prior written permission of LEISTER is forbidden.

Material: -		Volume:			
Date	Drawn by	<b>UNIPLAN 300 / 500</b>	Sheet		
08.04.20	Lack, Andy		4		
Date	Checked by		of		
			4		
Leister Technologies AG Switzerland		Format	Scale	Drawing number	Revision
		A3	1:5	020.901	E